



PMN-(15-50)

Gallon Water Meter

PMN-(15-50)

Gallon Water Meter ▼

Feature

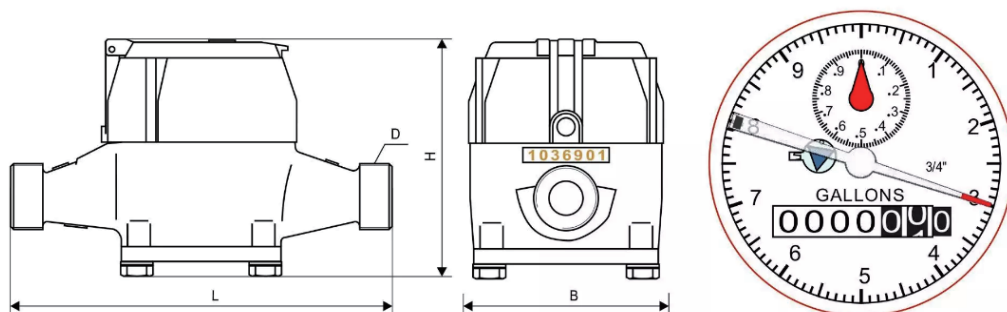
- Operating on a rotary piston principle
- Low starting flow rate and excellent metrological performance
- Magnetic drive, lower transmission resistance
- Copper encapsulated register and heat treated glass to eliminate dirt, moisture, infiltration and lens fogging
- The register can be replaced without removing the meter from the line.
- The register has a straight reading odometer type display and a 360 test circle with center sweep hand, a low flow test dial hand, a leak indicator
- The main case material options: Brass, Bronze and Non-lead Bronze

Option

- Pulse output for selecting Installation Requirements
- Pipeline must be flushed before installation
- The meter can be installed in horizontal, vertical or inclined position
- A horizontal position with the register face upwards is recommended
- The meter should be constantly full of water during operation

Compliance with Standard

Technical data conforms to AWWA C700 Standard



HYDRAULIC PERFORMANCE							
Size	inches	5/8"X1/2"	5/8"X3/4"	3/4"short	1"	1-1/2"	2"
TECHNICAL SPECIFICATIONS							
Hight flow rate	US gpm	20	20	30	50	100	160
Continuous flow rate	US gpm	15	15	15	25	50	80
Low flow rate	US gpm	1 / 8	1 / 8	1 / 4	1 / 4	1- 1 / 2	2
Nomal flow rate range	US gpm	1 - 20	1 - 20	2 - 30	3 - 50	5 - 100	8 - 160
Max.working pressure	psi	150	150	150	150	150	150
Max.working temperature	° F	122	122	122	122	122	122
Min reading	US gallon	0.01	0.01	0.01	0.01	0.1	0.1
Max reading	US gallon	9999999 . 99	9999999 . 99	9999999 . 99	9999999 . 99	99999999 . 9	99999999.9
Maximum permissible error	/	within the normal flow rate range is -1.5%~+1.5% at the low flow rate is -5%~+1%					
DIMENSIONS							
Body thread(D)	inch	3/4"	1"	1"	1-1/4"		
Length(L)	inch	7-1/2"	7-1/2"	7-1/2"	10-3/4"	13"	17"
Width(B)	inch	3-13/16"	4-5/16"	4-5/16"	6-3/4"	7-7/8"	9-3/8"
Height(H)	inch	4-7/8"	5"	5"	7-1/4"	8-1/2"	10-1/2"
Height when the lid opened	inch	8-1/4"	8-3/8"	8-3/8"	10-5/8"	11-7/8"	13-7/8"
Weight	pounds	4	4	6	11	23- 1/2	41